

PRECAST WALL SOLUTIONS



STRUCTURAL & CLADDING PRECAST SYSTEMS



STUBBE'S
PRECAST



STRUCTURAL PRECAST WALLS



Stubbe's Structural Precast Walls

are a smarter way to build—combining strength, insulation, and interior finish into one streamlined system. Designed for high shear resistance and thermal performance (up to R-40), these panels help enclose your building faster and cleaner. Plus, by eliminating the need for perimeter steel, you get a cleaner interior finish and a more efficient construction process. Compared to tilt-up, this system reduces site work, improves aesthetics, and speeds up project timelines—all while simplifying coordination on site.

Benefits:

- Up to R-40 continuous insulation
- Shear-resistant for structural stability
- Interior float or power-trowel finish
- Faster enclosure, earlier interior access
- No perimeter steel = cleaner interior and more flexibility with spacing of openings
- One trade = structure + enclosure
- Union and non-union install options
- Shipped to site with factory painted first coat
- Using the structural walls to sustain design loads the structural steel design can become even more efficient





PRECAST CLADDING WALLS



Precast Cladding Walls

Stubbe's Precast Cladding Walls provide a clean, insulated building envelope that complements your structural system. Designed to enclose the building quickly and efficiently, they offer up to R-40 insulation and come with factory-applied finishes.

Benefits:

- Up to R-40 continuous insulation
- Factory-applied paint and window installation
- Faster building dry-in
- Simplifies site work with fewer trades
- Faster enclosure, earlier interior access
- Combines performance and aesthetics
- Union and non-union install crews available





STUBBE'S PRECAST PRODUCTION

Plant 3 – Precision in Every Panel

At the heart of Stubbe's Precast operations is our Plant 3 facility in Harley, Ontario—one of three state-of-the-art plants on a 175-acre site featuring over 546,000 square feet of indoor production and support space. Dedicated to both structural and architectural precast concrete, this facility showcases the scale, efficiency, and craftsmanship behind every panel we produce. With highly trained crews and advanced equipment, Plant 3 ensures consistent quality and precision from design to delivery.



PRECAST FINISHES

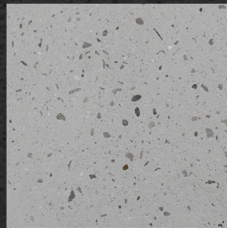
Mold Liners, Coatings, and Stains



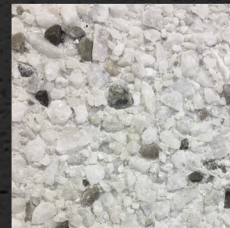
Micro Etch



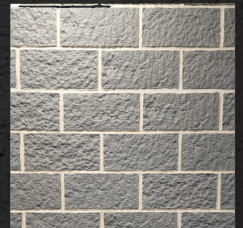
Medium
Sandblast White
Cement



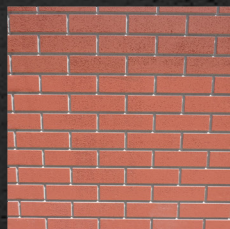
Heavy
Sandblast



Exposed
Aggregate
White Cement



Split Face Block



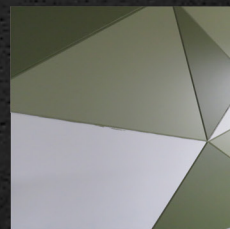
Textured Face
Brick



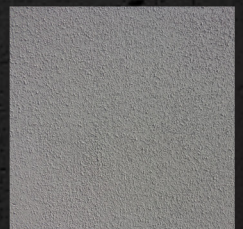
Multi Tonal
Stone



Ashlar Stone



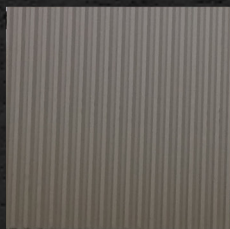
Reveals



Textured Paint



San Diego
Fieldstone



Fluted Rib



Light Grain
Cedar Wood



White Cement



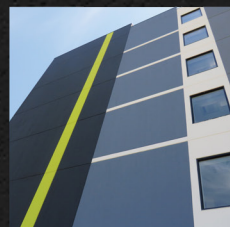
Board & Batten

Available in any colour.

Please contact us for your stain or paint options. BASF Master Protect HB300SB

Further precast finishes are being worked on today.

Accents/ Specialty



ABOUT STUBBE'S



About Stubbe's

Stubbe's is a family-owned and operated company with over 40 years of experience delivering innovative and reliable concrete solutions. What began as a small precast operation serving the agricultural market has grown into a diversified group of businesses offering a full range of concrete products and services across Ontario.

Driven by a commitment to quality, customer service, and forward-thinking solutions, Stubbe's is your one-stop provider for concrete construction—serving the agricultural, commercial, industrial, and residential sectors. Our operations include:

- **Stubbe's Precast** – Structural and architectural precast concrete solutions
- **Stubbe's Redi-Mix** – Ready-mix concrete delivery and batching services
- **Stubbe's Cement** – Bulk cement supply
- **Stubbe's Logistics** – Specialized transportation and delivery

With extensive in-house expertise and state-of-the-art facilities, Stubbe's continues to provide cost-effective, durable, and efficient building systems designed to meet the needs of modern construction.



STUBBE'S
PRECAST

44 Muir Line, Harley, NOE 1E0
519-424-2183
estimating@stubbes.org
stubbes.org